

CAMPUS CONNECTIONS

A Newsletter for Burman University

8 October 2020

Join us for a slice of Thanksgiving pie on Thursday at 12:15—1:15 pm at the Sundial weather permitting.

Poetry Society General Meeting Thursday, Oct. 8- 8:30 p.m. on Zoom (Check you e-mail) Join in to learn more and make decisions for this club.



September 26 the City of Lacombe honoured Mamawi Atosketan students from Samson Cree Nation namely : Tessa Potts and Eilene Firingstone by unveiling the Grouse monument the girls had worked on all summer of 2020. This monument sits at the Circle Drive in Lacombe.

Pathways
DEPRESSION & ANXIETY RECOVERY PROGRAM

**YOU ARE NOT ALONE!
THERE IS HOPE!
WE CAN HELP!**

For teens and young adults
8 Tuesdays beginning
October 13, 7-8pm

FREE

More info & Register at
www.come2life.ca
Education program only

presented by

COME2LIFE
HELP • HOPE • HEALING

For more information:
587.334.7572 | @come2life_youth

You can register for this free online event at <https://www.eventbrite.ca/e/pathways-depression-and-anxiety-recovery-tickets-122923245737>

Week at a Glance

Sunset: 6:54 pm

Friday, October 9

Thanksgiving Break—No CAYA

SABBATH

First Service 9:15 am

In-Person- College Heights SDA Church * Please register for this event at: <https://mychurch.chsda.ca/>

Online- <https://livestream.com/chsda>

Speaker: Pastor Jeff Potts

SABBATH SCHOOL

Church <https://livestream.com/chsda>

10:30 am

SS Discussion Coordinator

Wanda Johnson

Ignite 12:00 pm

Online - <https://livestream.com/burmanu>

In person- College Heights SDA Church * Please register for this event at: <https://mychurch.chsda.ca/>

Speaker: Pastor Jordane Smith

Coming up....

Thanksgiving/Reading Break

October 10-13

Tuesday, October 13

Bus Trip to Red Deer

12:30-5:30 p.m.

Location: Bower Mall & Walmart
(sign up sheet will be sent via e-mail)

Saturday, October 17

BULAA Games Night

Watch your email for more information

Important Academic Dates:

October 19 Second 1/2 term begins

October 21 Last day to add any second 1/2 term or professional term course

September 30 - October 29 50% Tuition Refund for full-term courses

5 Ways to Wellbeing

from your Sakala Student Success Centre

Tip #1

Connect

<https://youtu.be/q5OFETAfk9A>

Tip #2

Be Active

<https://youtu.be/ALT7HHQ3v7k>

Tip #3

Be Present

<https://youtu.be/9SNepIzqecU>

Tip #4

Learn

<https://youtu.be/zPonsJU6aT8>

Tip #5

Give

<https://youtu.be/q8YJtdXRSv8>



Burman Virtual Tutoring: Fall Term 2020

All times are in MDT (Alberta Time Zone)

For Tutor Details Please Connect with your Professor and watch your Burman email for an

Subject	Time	Platform
A & P	Wednesdays 3:00 - 4:00 pm	Zoom
Biology 119	Mondays 6:00 - 7:00 pm	Zoom
Micro Biology	Contact Prof for Tutor Details - or Crystal (See below)	
BioChem	Contact Prof for Tutor Details - or Crystal (See below)	
Chem 111	Thursdays 6:00 - 7:00 pm	
Chem 111	Sundays 3:00 - 4:00 pm	Google
Chem 241 (Ochem)	Tuesdays 6:00 - 8:00 pm	Zoom
Human Ecology	Contact Prof for Tutor Details - or Crystal (See below)	
Accounting 211	Contact Prof for Tutor Details - or Crystal (See below)	
Intermediate Acct.	Contact Prof for Tutor Details - or Crystal (See below)	
Business Finance	Contact Prof for Tutor Details - or Crystal (See below)	
Math 100	Wednesdays 3:00 - 4:00 pm	Zoom
Math 151	Contact Prof for Tutor Details - or Crystal (See below)	Zoom
Statistics	Thursdays 8:00 - 9:30 pm	
Physics 111	Contact Prof for Tutor Details - or Crystal (See below)	
Logic	Tues & Thurs 11:00 - noon	Zoom
Philosophy	Contact Prof for Tutor Details - or Crystal (See below)	
Intro to Psychology	Contact Prof for Tutor Details - or Crystal (See below)	
Intro to Sociology	Thursdays 2:00 - 3:00 pm	Zoom
Canadian History	Contact Prof for Tutor Details - or Crystal (See below)	
Writing Centre	shelleyagrey@burmanu.ca	
Writing Centre	or text 403-506-2111 to arrange	
French	Wednesdays 8:00 - 9:00 pm	Zoom
Greek I	Contact Prof for Tutor Details - or Crystal (See below)	
Greek II	Contact Prof for Tutor Details - or Crystal (See below)	Zoom
Foundations Youth Min.	Contact Prof for Tutor Details - or Crystal (See below)	
SDA History	Contact Prof for Tutor Details - or Crystal (See below)	
History of Christianity	Contact Prof for Tutor Details - or Crystal (See below)	
PAA Math/Science	Mondays & Tuesdays 7:30 - 9:00 pm	Zoom

*If you have tutoring needs in any classes not listed above please contact Crystal at:

403-782-3381 ext. 4141 or cjohnson@burmanu.ca

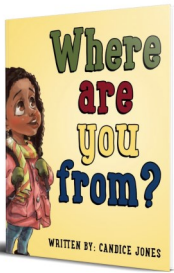
A study classroom located at the Outward Pursuits Department is available with individual work tables and good Wifi. It is set up for to allow individual or group work (there are 6-8 workstations in the same room). Does not require the usage of face masks unless you are in close contact with someone (less than 2 meters). This space is available by appointment only. Text (587) 876-2224 or email Kevin Kiers to request a table.

Maple Hall Residents Do you like to receive mail? Come to Student Services to set up your mailbox. Mailboxes are located on the first floor of the Administration Building.

Off-Campus Students Need a place to receive your mail? Come to Student Services to set up a mailbox. Mailboxes are located on the first floor of the Administration Building.

Finding Purpose in Uncertain Times Finding Purpose in Uncertain Times is the theme for Association of Adventist Women (AAW) conferences beginning October 10, 5-6 PM Pacific time. Read more at <https://atoday.org/association-of-adventist-women-conferences-begin-october-10-2020/>

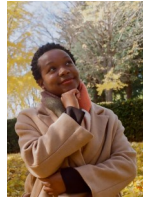
LifeTalk Radio Launches Online Channel for Kids LifeTalk Radio®, a media ministry of the North American Division of Seventh-day Adventists, has launched a daily, 24-hour, online radio channel designed especially for children. Read more at <https://www.nadadventist.org/news/lifetalk-radio-launches-online-channel-kids>



"Where are you from?" is a story about multiculturalism in Canada. The differences that we have in our features, languages, and origins make up **the uniqueness of Canada.**

This story is from the perspective of an elementary school **Caribbean Canadian girl.** She enters a new school and meets her teacher and classmates for the very first time. **Tolu sees all the different features** in her class and decides to ask the question, "**Where are you from?**" to the kids she is most curious about. In this book, your child will learn about Canada's provinces, the diverse people we have in this nation and learn some neat things about other countries!

Candice Jones is currently a Burman University student in the Elementary Education, After degree program. This story is the first of three books, and she hopes to continue writing throughout her professional career in teaching. This book is available for purchase at the ABC Bookstore in Lacombe and online on Amazon.ca!



VEDGE GROCERY PROGRAM

We are pleased to announce the most awaited Online Grocery Program!

What Can You Order?

- PLANT BASED GROCERIES
- VEGETARIAN MEAT PROTEIN
- PANTRY / NON-PERISHABLE ITEMS (Dry goods such as lentils, rice and more)
- OTHER DAILY USED PRODUCTS (Plastic fork, knife, spoon and more)

How to Register for The Program?

- To register go online and type in www.burmanu.catertrax.com
- Register with your name, email and create a password.
- Hassle free option of paying by cash or CC. (**Coming Soon-Meal card payment for online prepared food order)
- You are all set to order!

For more Information feel free to contact Pankaj Singh @ [403-352-9869](tel:403-352-9869)

Need some pocket money? Community people are looking for people/students to perform odd jobs like washing walls and washing outside windows. If you are able to help, FCSS has the list . Contact Denise at 403-782-6637 ext. 310